



*We separate the wheat from the chaff*

## Modular Cleaners JCM

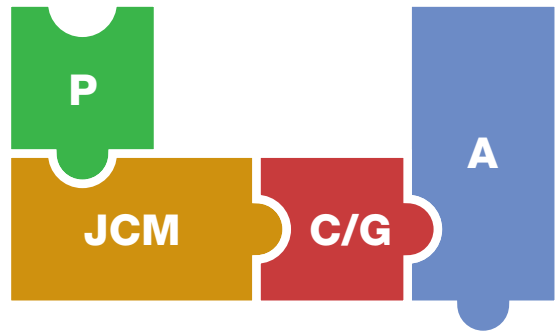
# VibroMAX<sup>®</sup>



- Pre-Cleaning, Cleaning and Fine Grading
- Modular Combinations
- Unequalled Variability
- Excellent Separating Efficiency
- Superior Performance within a Compact Area

# VibroMAX®

a multi-purpose modular cleaner and grader of dry granular products. The VibroMAX separates particles by size (sieve cleaning) and by different aerodynamical properties (air cleaning). The core of the machine is a vibratory sieve box with various modular components that can be selected to form a variety of combinations for the most effective results.



## Module Design of the Cleaner VibroMAX

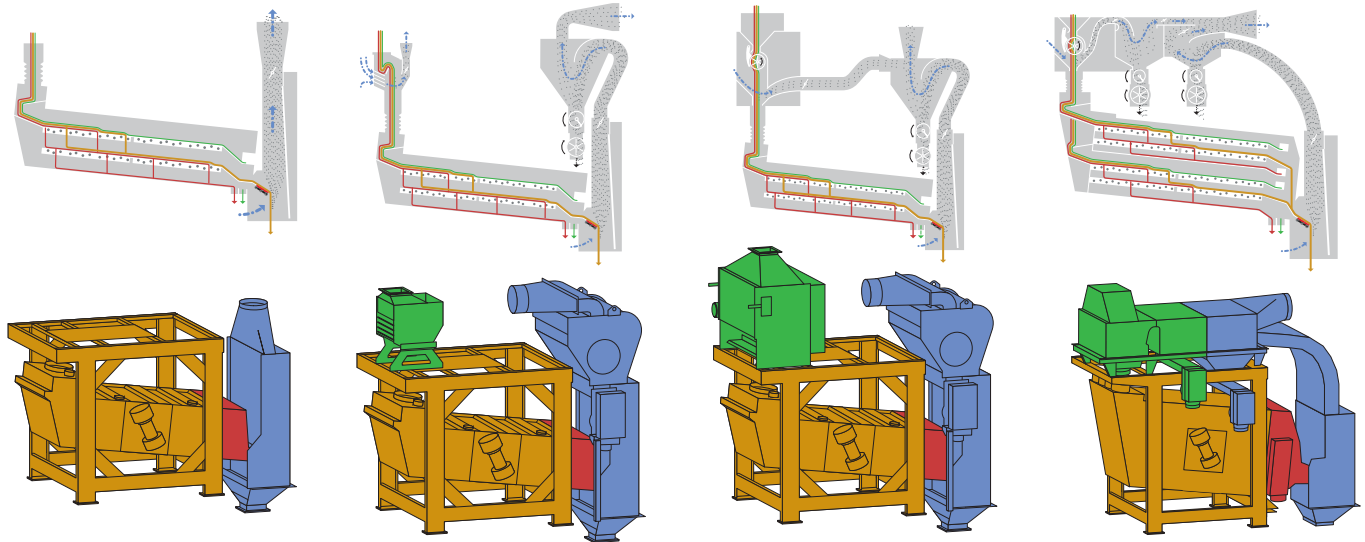
Examples of the various configurations for the Cleaner VibroMAX

JCM 10122.C1P0A2

JCM 10122.C1P1A3

JCM 10122.C1P2A3

JCM 15223.C1P3A3



## Capacity Parameters VibroMAX

### SINGLE-PURPOSE ●

Pre-Cleaners or Graders		JCM	10112	10212	10213	10313	15213	15313	15413
Number of Sieve Rows in the Sieve Section			1	1	1	1	1	1	1
Capacity	Pre-Cleaning	t/h	50	100	120	160	200	300	400
	Grading	t/h	8	16	24	36	30	45	60
Sieve Area		m <sup>2</sup>	1,7	3,4	5,1	7,65	6,3	9,45	12,6

### MULTI-PURPOSE ● ● ●

Pre-Cleaners, Cleaners and Graders		JCM	08122	10122	10123	10222	10223	15223	10133
Number of Sieve Rows in the Sieve Section			2	2	2	2	2	2	3
Capacity	Pre-Cleaning	t/h	25	60	60	100	100	200	-
	Industrial Cleaning	t/h	12	25	40	50	80	90	40
	Fine Cleaning (Grading)	t/h	6	12	18	24	36	45	18
Sieve Area		m <sup>2</sup>	1,9	3,4	5,1	6,8	10,2	12,6	7,65

Technical alterations reserved.

# Inlet Aspiration



P0	P1	P2	P3
Aspirated Infall	JAC – Aspiration Pre-Cleaner without Rotary Feeder	JAM – Aspiration Pre-Cleaner with Rotary Feeder	JAN – Aspiration Pre-Cleaner with Rotary Feeder and Expansion Chamber

# Sieve Boxes



Types of Sieve Boxes			
<b>JCMxxxxx</b> Width of Sieve Box (xx00 mm)	112	212	223
<b>JCMxxxxx</b> Number of Sieve Sections in the Sieve Box	122	213	313
<b>JCMxxxxx</b> Number of Sieve Rows in the Sieve Section	123	222	413
<b>JCMxxxxx</b> Number of Sieves in Each Row	133		

# Outlet Boxes



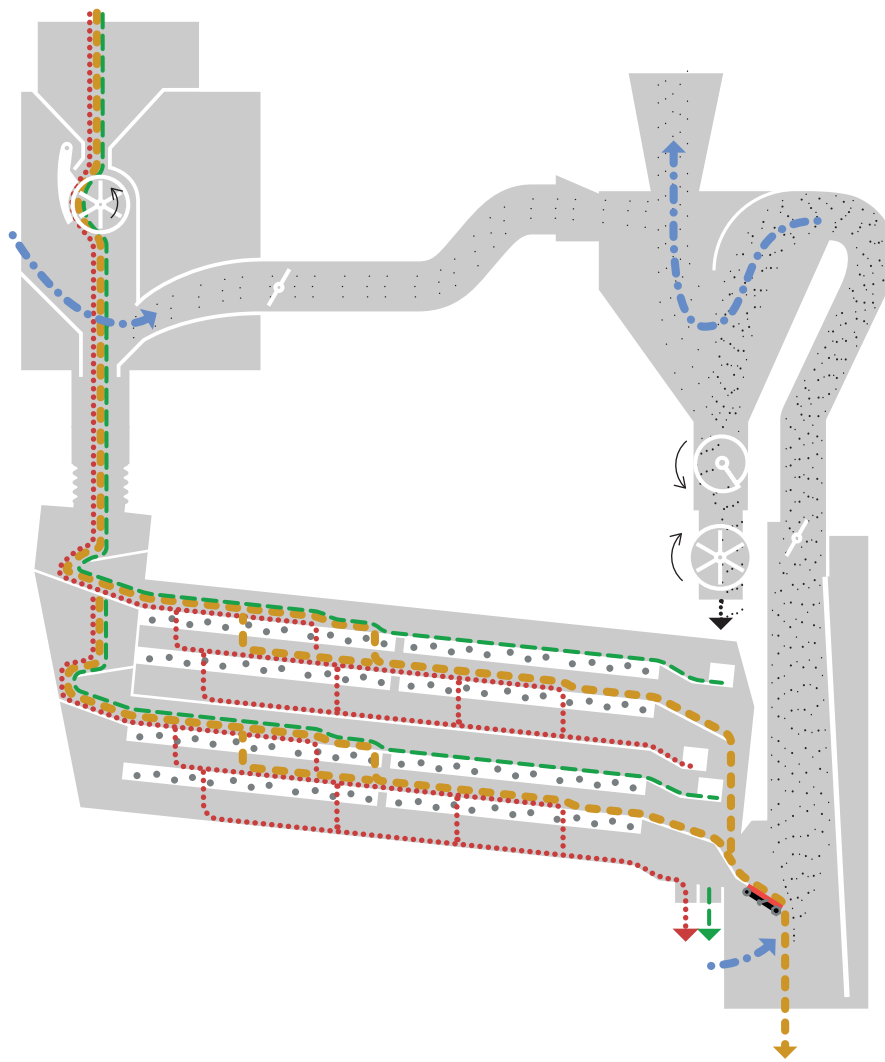
C	G
Cleaner – cleaning of the main fraction from impurities and admixtures	Grader – grading of the material into several grades according to size







# Outlet Aspiration



A0	A1	A2	A3
Without Outlet Aspiration	JAA – Aspiration Box with Fixed Channel	JAB – Aspiration Box with Adjustable Wall	JAE – Aspiration Channel with Adjustable Wall and Expansion Chamber

## Functional Diagram of the Modular Cleaner VibroMAX



- |   |   |  |
|---|---|--|
|  Clean product     |  Aspiration        |  Magnet |
|  Coarse impurities |  Light impurities  |  |
|  Small impurities  |  Sieves with balls |  |